

**MEDDI hub s.r.o.**

Zelenečská 115, 917 02 Trnava

(+421) 221 025 382 • [info@meddi.com](mailto:info@meddi.com) • [www.meddi.com](http://www.meddi.com)



# Technical specifications and instructions

## MEDDI BioScan



1.1.1. MEDDI BioScan	3
1.1.1.1. Measurement principles	3
1.1.1.2. Measured values	3

### 1.1.1. MEDDI BioScan

The MEDDI BioScan function is not a medical device according to current legislation. It is not intended to diagnose, treat or prevent any disease, injury or disability or to monitor physiological status for therapeutic purposes. The measurements obtained by using the MEDDI BioScan function are for guidance only and the results are for personal use only.

It is a module for measuring body functions using photoplethysmography via the front or rear camera of a smartphone.

#### 1.1.1.1. Measurement principles

The method is based on spectrophotometry and photoplethysmography. An important parameter for measurement is the presence of hemoglobin in the blood. The oxygen saturation of arterial blood is expressed as the amount of oxyhemoglobin (the sum of oxyhemoglobin and deoxyhemoglobin). The whole measurement is non-invasive.

Because oxyhemoglobin and deoxyhemoglobin have different light absorbances, we can distinguish between them and determine their amounts. To minimize various unwanted effects, such as different skin pigmentation, the influence of venous blood and other components of the maged tissue, these effects are separated from the pulse absorption data.

#### 1.1.1.2. Measured values

Individual data obtained by photoplethysmographic method.

List of measured values:

- Pulse
- Blood pressure
- Respiratory rate
- Blood oxygen saturation
- Stress level
- Recovery ability
- Stress response

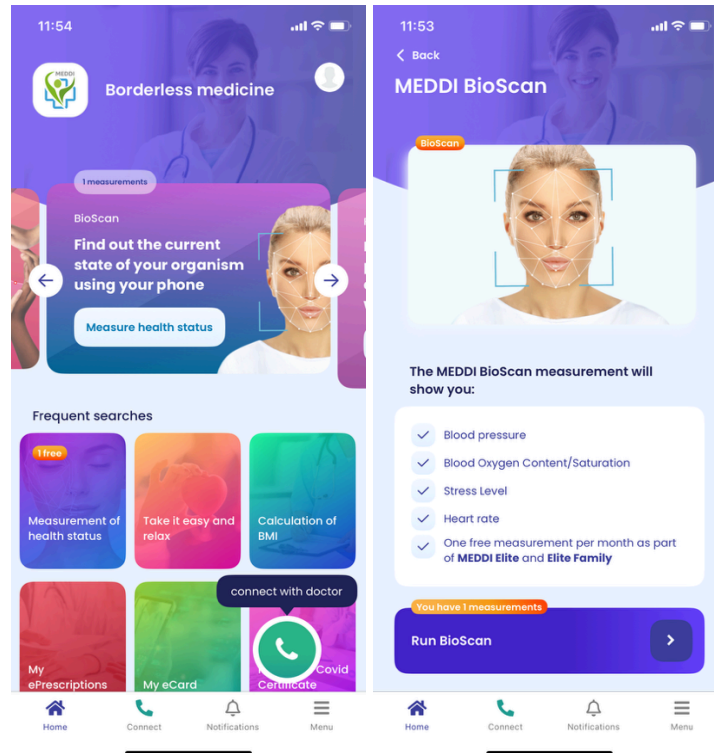


Fig.: MEDDI BioScan Home screen

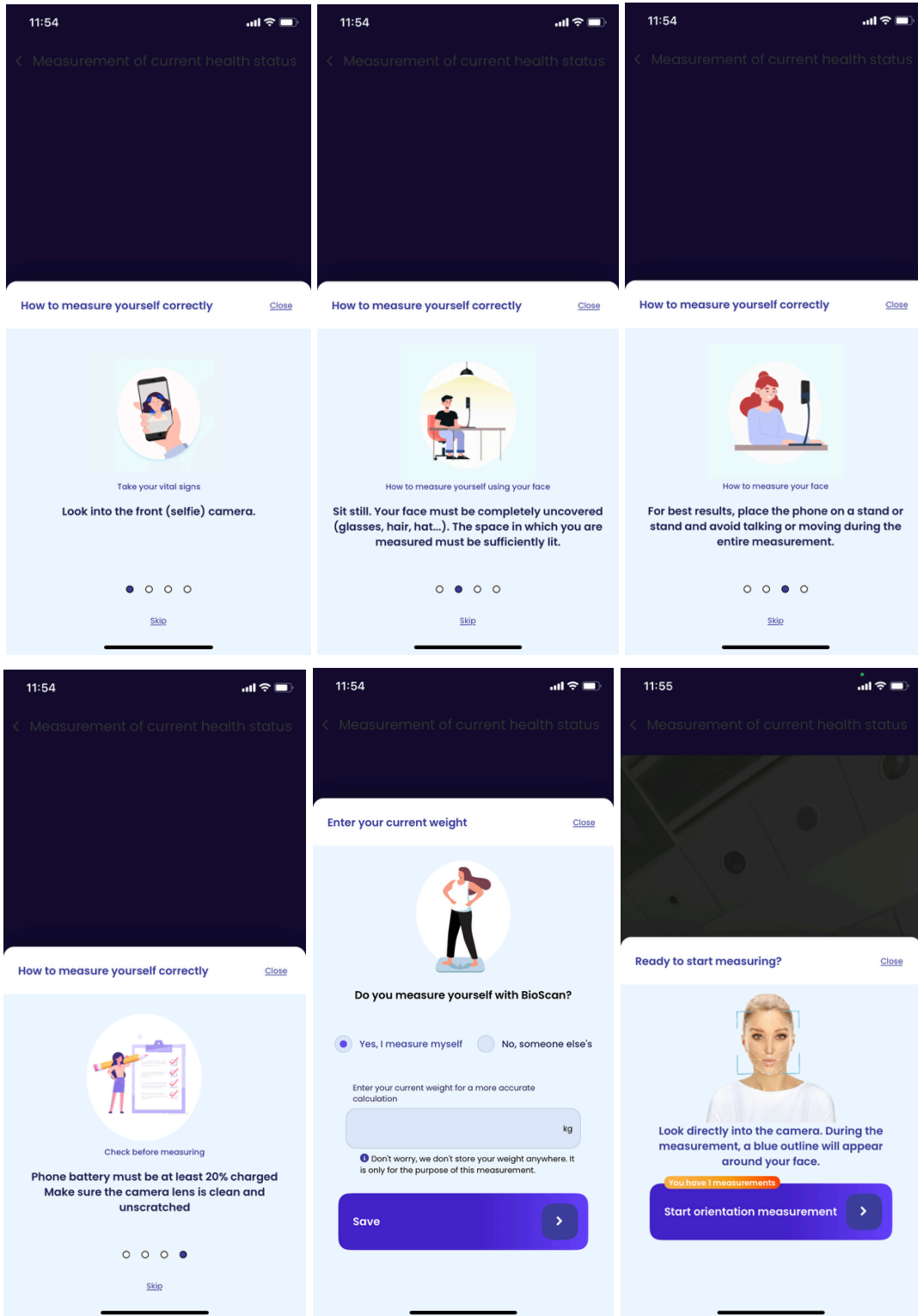


Fig.: MEDDI BioScan User guide

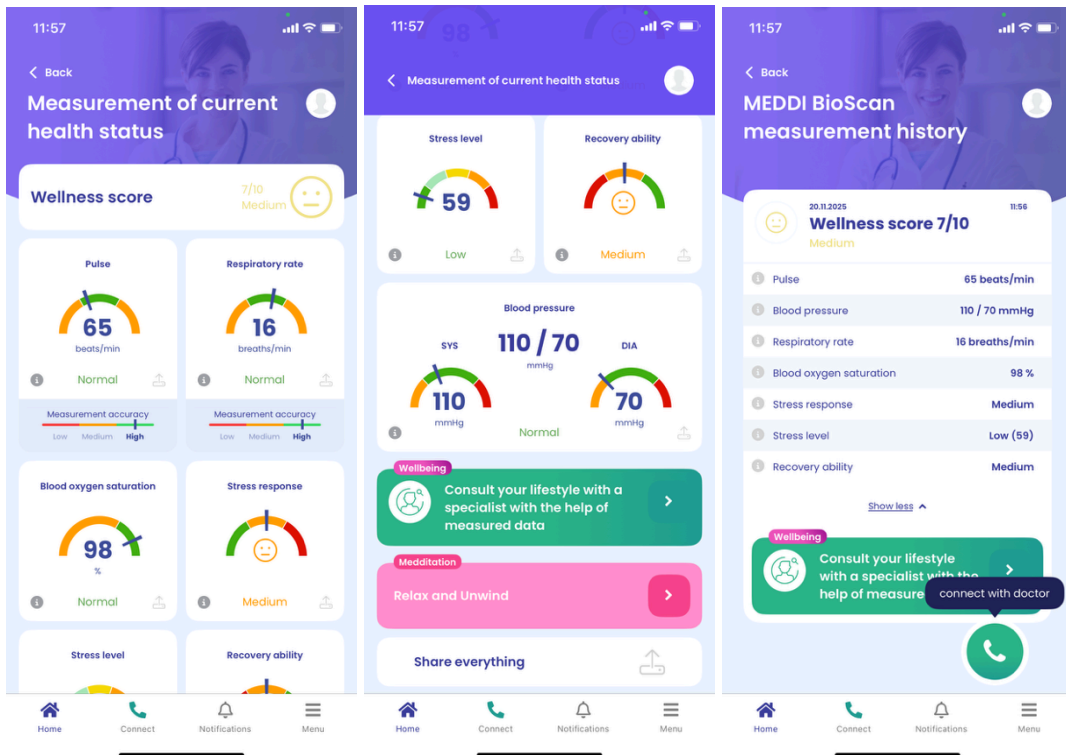


Fig.: MEDDI BioScan Measurement data summary display